


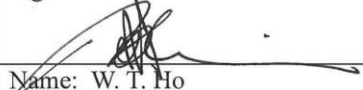


Civil Engineering and Development Department
Contract No. NL/2017/03

**Tung Chung New Town Extension – Reclamation and
Advance Works**

Silt Curtain Deployment Plan

Revision 5

Compiled By :	Authorized for issue :
Signature : 	Signature : 
Name: Issac Wong Post : Environmental Officer Date : 2 Mar 2023	Name: W. T. Ho Post : Project Manager Date : 2 Mar 2023



Tung Chung New Town Extension

Environmental Certification Sheet for Environmental Permit No. EP-519/2016

Reference Document/Plan

Document/ Plan to be Certified:	Silt Curtain Deployment Plan (Revision 5)
Date of Report:	2 March 2023

Reference EP Condition

Environmental Permit Condition:	Condition 2.16
The Permit Holder shall, no later than 3 months before the commencement of reclamation related marine works at Tung Chung East, submit 3 hard copies and 1 electronic copy of a Silt Curtain Deployment Plan (The Plan) to the Director for approval.	

ET Certification

I hereby certify that the above referenced document/plan complies with the above referenced condition of EP-519/2016

Kelvin So
Environmental Team Leader
ERM-Hong Kong, Limited



Date: 14 March 2023

Qualified Ecologist Certification

I hereby confirm that the Qualified Ecologist of the ET has been consulted in preparing ecological aspects of the above referenced document/plan.

Raymond Chow
Qualified Ecologist
ERM-Hong Kong, Limited



Date: 14 March 2023



Your Ref.

Our Ref. 198377-0660

Date 14 March 2023

By Post

Sustainable Lantau Office
Civil Engineering and Development Department
13/F, North Point Government Offices
333 Java Road, North Point
Hong Kong

Attention: Mr. Eddie LAM / Mr. K.T. WO

Dear Sirs,

Agreement No. CE 59/2017 (EP)
Independent Environmental Checker for Tung Chung New Town Extension – Investigation
Silt Curtain Deployment Plan (EP condition 2.16)

We refer to the Silt Curtain Deployment Plan (Revision 5) for Tung Chung New Town Extension (East) (TCE) dated 2 March 2023 and certified by the Environmental Team Leader of TCE on 14 March 2023. Please note we have no adverse comments on the captioned submission. The captioned submission is hereby verified in accordance with the requirement stipulated in Condition 2.16 of EP-519/2016.

Should you have any query, please feel free to contact the undersigned at 2608 7314 (chuawo@binnies.com) or our Edward Lau at 3894 9695 (lauky@binnies.com).

Yours faithfully,
for and on behalf of
BINNIES HONG KONG LIMITED



MANUEL CHUA
INDEPENDENT ENVIRONMENTAL CHECKER

cc: ET Leader / TCE – ERM (Attn: Mr. Kelvin So) [by Email: kelvin.so@erm.com]
PM / TCE – AECOM (Attn: Mr. Chris Cheung) [by Email: crc1@tce-aecom.com]

 Binnies Hong Kong Limited
43/F, AIA Kowloon Tower, 100 How Ming Street, Kwun Tong, Kowloon, Hong Kong
賓尼斯工程顧問有限公司
香港九龍觀塘巧明街 100 號友邦九龍大樓 43 樓

 +852 2601 1000  +852 2601 3988  binnieshk@binnies.com



Revision Summary

Revision Number	Date of Report	Amendment
1	21 May 2018	First submission
2	7 Nov 2018	Updated to include silt curtain arrangement of the DCM trial embankment (at the works area near Tai Ho Wan) and sand filling
3	30 Apr 2019	Updated Appendix C5 - silt curtain arrangement of the DCM trial embankment (at the works area near Tai Ho Wan) and sand filling
4	28 August 2020	<ol style="list-style-type: none"> 1. Section 5 - Added the Reporting Mechanism when significant and insignificant defect on silt curtain was found; 2. Appendix C6 - Updated Silt Curtain Layout for the Perimeter Silt Curtain during all Reclamation Works 3. Appendix E – Updated the Environmental Mitigation Implementation Schedule
5	2 Mar 2023	<ol style="list-style-type: none"> 1. Section 6 – Removal of silt curtain is updated 2. Appendix C7 - Silt Curtain Layout for the Perimeter Silt Curtain after completion of reclamation works is added

Contents

1. [Introduction](#)
2. [Silt Curtain Deployment Programme](#)
3. [Design of Silt Curtain](#)
4. [Silt Curtain Installation](#)
5. [Operation, Maintenance, Regular Patrol and Monitoring of Silt Curtain](#)
6. [Removal of Silt Curtain](#)

[APPENDICES](#)

[Appendix A: Construction Programme](#)

[Appendix B: Design and Job Reference of Silt Curtain](#)

[Appendix C: Layout of Silt Curtain](#)

[Appendix C1: Localized Silt Curtain Arrangement for Dredge Barge with Closed Grab](#)

[Appendix C2: Localized Silt Curtain Arrangement for Derrick Barge with Closed Grab](#)

[Appendix C3: Silt Curtain Layout for Protective Silt Curtain before Commencement of Construction Works](#)

[Appendix C4: Silt Curtain Layout during DCM trial for DCM Trial Embankment \(at the works area near Tai Ho Wan\)](#)

[Appendix C5: Silt Curtain Layout during Reclamation Filling for DCM Trial Embankment \(at the works area near Tai Ho Wan\)](#)

[Appendix C6: Silt Curtain Layout for the Perimeter Silt Curtain during all Reclamation Works](#)

[Appendix C7: Silt Curtain Layout for the Perimeter Silt Curtain after completion of Reclamation Works](#)

[Appendix D: Silt Curtain Inspection Checklist](#)

[Appendix E: Implementation Schedule of the Major Environmental Mitigation Measures](#)

1. Introduction

Under the Environmental Impact Assessment Ordinance, the Environmental Impact Assessment (EIA) Report (Register No. AEIAR-196/2016) prepared for the “Tung Chung New Town Extension” has been approved by the Environmental Protection Department (EPD), and an Environmental Permit (Permit no. EP-519/2016) has been issued for the project. Pursuant to Condition 2.16 of the Environmental Permit, Silt Curtain Deployment Plan should be submitted prior to the commencement of reclamation related to marine works at Tung Chung East. The plan includes the construction programme and detail on the design, operation, maintenance, regular patrol and monitoring of the silt curtain to be deployed during the construction.

Accordance with condition 2.5 of the EP, Qualified Ecologists had been appointed to form part of the ET and carry out work relating to ecological aspects. The Qualified Ecologists had been consulted in preparation of this Plan.

2. Silt Curtain Deployment Programme

A brief programme showing the major reclamation works and their related works is enclosed in **Appendix A**. In general, perimeter silt curtain has to be deployed to enclose the works area as far as practicable. The minimum length of overlapping silt curtain and the width of gap between 1st and 2nd layer of silt curtain is 150m and 100m respectively. Where the marine works are not enclosed by perimeter silt curtain, localized silt curtain around the marine works shall be deployed to enclose the works area before start of the marine works. Additional localized silt curtain (frame type silt curtain) will also be deployed when placing sand with fine content of >5% to 10% onto the seabed (see **Appendix C1** and **Appendix C2**). Some indicative phases of silt curtain deployment are presented as follows:

1. Protective silt curtain (floating single silt curtain type) will be deployed before commencement of construction works in order to minimize potential water quality impacts that may be caused by vessel’s movements during site investigation works at shallow water area (see **Appendix C3** for the Silt Curtain Layout).
2. Installation of Perimeter Silt Curtain during DCM trial for DCM Trial Embankment (at the works area near Tai Ho Wan) (see **Appendix C4** for the Silt Curtain Layout).
3. Installation of Perimeter Silt Curtain during reclamation filling for DCM Trial Embankment (at the works area near Tai Ho Wan) (see **Appendix C5** for the Silt Curtain Layout).
4. Perimeter silt curtain (floating single silt curtain type) will be deployed during all reclamation works (see **Appendix C6** for the Silt Curtain Layout).

In case the silt curtain layout has to be updated due to potential work constraints or marine safety, the proposed silt curtain layout shall be reviewed and agreed by the Environmental Team and the Independent Environmental Checker as sufficient to control the potential water quality impact due to the associated marine works before implementation.

3. Design of Silt Curtain

The floating single silt curtain consists of a layer of geotextile tied on 300-500mm diameter sub-buoys. The geotextile extended to the seabed level secured by steel chain ballast. The buoys will be further positioned by nylon ropes tied on nearby existing structures. Sufficient length of geotextile will be provided such that the silt curtain can be extended from the water surface to the seabed during high tide condition. The minimum overlapping length between the different sheet is 150m. Silt curtain (Model DSP15) with curtain depth of 7.4m (D=7.4m) and curtain strength 15 ton/m (Canvas (15ton/m)) is deployed in this project. Job reference and typical section of the proposed silt curtain is attached in **Appendix B**.

4. Silt Curtain Installation

- i) Link up 300-500mm buoys together by a net
- ii) Tie up top end of the geotextile to the buoys net and the bottom end with steel chain ballast before transportation.
- iii) Transport the silt curtain to the location for fixing via a marine pontoon.
- iv) Refer to the Environmental Permit No. EP-519/2016 Clause 2.27, a dolphin exclusion zone of 250m shall be implemented around the reclamation site during the installation or redeployment of the perimeter silt curtain. Before the start of the installation work, Qualified Ecologists with dolphin monitoring experience shall scan the exclusion zone for at least 30 minutes. If dolphins are observed in the exclusion zone, the installation work shall be delayed until the dolphins left the area.
- v) Workers tie the buoys to the water and then slowly put the geotextile with the steel chain ballast into sea.
- vi) Put the buoys to the water and then slowly put out the geotextile with the steel chain ballast into sea.
- vii) In order to maintain the position of the silt curtain especially at location with strong current, place concrete sinkers to the seabed if required and tie the silt curtain to the sinkers with nylon strings by divers.

If dolphins are observed within the exclusion zone during the installation work, the relevant part of the work shall cease until the dolphins left the area.

Once the perimeter silt curtains are installed or re-deployed, the Dolphin Watching Plan shall be implemented as part of the EM&A programme.

5. Operation, Maintenance, Regular Patrol and Monitoring of Silt Curtain

- i) On-board supervisors will be assigned to check the condition of the silt curtain before commencement of works every day. Completed inspection checklists will be kept on site for record purpose. Refer **Appendix D** for the sample of Silt Curtain Daily Inspection Checklist. Diver inspection will be arranged after adverse weather and when necessary.
- ii) For the tentative arrangement of silt curtain under adverse weather (e.g. Red or Black Rainstorm, Typhoon Signal No. 3 or above etc.), the silt curtain will not be temporary removed during adverse weather. However, related works will be suspended immediately if silt curtain is found any damaged. Immediate inspection of silt curtain after adverse weather is necessary. Working procedures include (1) lift up the silt curtain for water by derrick barge, (2) sew (double-line sew) a new piece of geotextile to the existing geotextile to cover the damage area, (3) ensure sufficient overlapping length (150m) & width of gap (100m) and (4) diver inspection shall be carried out if necessary to inspect the installation and decommission of silt curtain to ensure proper installation and functioning of the silt curtain according to the design drawings. Nearby marine works will resume after repairing of the damaged silt curtains.
- iii) Refuse around the silt curtain will be collected at regular intervals on a daily basis so that water behind the silt curtains will be kept free from floating debris.
- iv) Sufficient spare geotextile will be kept on site for replacing of damaged silt curtains. The spare geotextile shall be kept in place to avoid direct contact with water and sunlight.

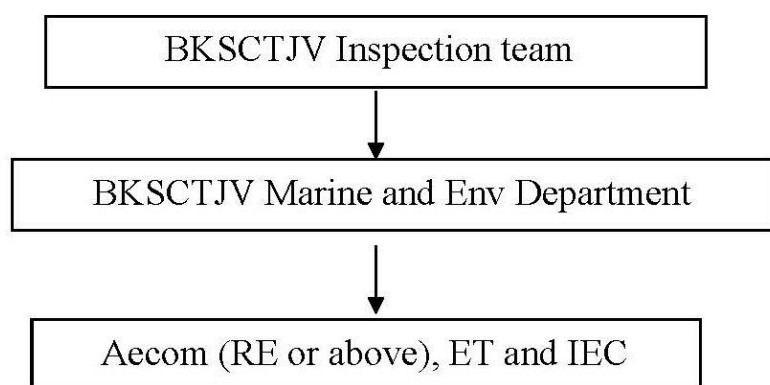
Reporting Mechanism

When insignificant defect of silt curtain gap less than one unit length of the silt curtain (around 20m), BKSCTJV Inspection team will inform BKSCTJV Marine and Environmental Department, and arrange resource to carry out repairing work.

As the major works conducted near to the perimeter silt curtain are marine DCM works and sand placing works. All the DCM barges are under confinement by an additional primary and secondary silt curtain. Meanwhile, a frame-type silt curtain will be installed around the grab when placing sand onto the seabed. Therefore, with these protective measures, it is considered that sufficient protection to the marine quality is provided.

When significant defect of silt curtain gap greater than one unit length of the silt curtain (around 20m), the following reporting mechanism should be implemented:-

1. Once JV Inspection team identified the defect, they will take immediate photos and then send to JV Marine Department and Environmental Department,
2. JV Environmental Department reporting to PM, ET and IEC, including the anticipated time to repair completion,
3. Request advice from PM, ET and IEC on whether any works should be suspended or slowed down, etc, shall be discussed.



6. Removal of Silt Curtain

Prior to removal of silt curtains, all marine works for which the silt curtains are deployed shall be stopped and visual inspection of the water quality within the area protected by silt curtains shall be conducted to confirm no sediment plume remaining within the works area before commencing silt curtain removal.

Floating silt curtains shall be removed by detaching the chain connecting the silt curtain to the anchors. Care should be taken to protect the silt curtain skirt from damage as it is dragged from the water. The remaining anchors shall be individually connected to the crane by divers and carefully lifted off the seabed for recovery onto the barge to minimize the disturbance to the seabed.

Silt curtain removal schedule

As all reclamation works below +2.5mPD are completed at VS1, SS1/MES and all reclamation area respectively and no marine works will be conducted in such area, it is scheduled to remove the silt curtain as below:

Silt curtain removal schedule	Location of silt curtain removal	Date (tentative)
Stage 1	SS1/MES, VS1	Q2 of 2023
Stage 2	All reclamation area	Q2 of 2023 (Subject to site condition)

For more details, please refer to Appendix C7 – Silt Curtain Layout for the Perimeter Silt Curtain after completion of reclamation works.

Silt curtain shall be removed in accordance with the Silt Curtain Deployment Plan and contract requirement and subject to obtaining the acceptance from the Project Manager and relevant authorities including Environmental Protection Department.

Appendix A

Construction Programme

Contract Title : Tung Chung New Town Extension - Reclamation and Advance Works
Working Programme for Marine Works (Reclamation and Seawall Construction)

Information and Advance Works

Activity	2018			2019			2020			2021			2022			2023									
	Jan	Feb	Mar	Apr	May	Jun	Jul	Aug	Sep	Oct	Nov	Dec	Jan	Feb	Mar	Apr	May	Jun	Jul	Aug	Sep	Oct	Nov	Dec	
Site Preparation Works (GI investigation and other preparation works)																									
DCM Construction																									
Drainage works																									
Box Culvert Construction Interim Channel Construction																									
Reclamation Works																									
Phase 1																									
Phase 2																									
Phase 3																									
Phase 4																									

Appendix B

Design and Job Reference of Silt Curtain



Daeyoun Geotextile Silt Protector

Date	Project	Client	Consultant	Model	Size (W x Lm)	No. of Span
Jul-03	CV/2002/04 Penny's Bay Reclamation Stage 2	Gammon Construction Ltd	Scott Wilson Ltd		5 x 20m 5 x 10m	86 256
May-13	DC/2011/01 Drainage Maintenance and Construction in Mainland South Districts (2011-2015)	World Diamond Engineering Ltd	Drainage Services Department	GSP 15	5x20m 3x5m 3x2m 3x13m	1 10 1 4
Apr-14	HY/2012/07 Dual 2-lane carriageway between HZMB BCF and North Lantau Highway	Gammon Construction Ltd	AECOM Asia Co Ltd	DSP15	6 x 20 7 x 20 9 x 20	24 10 10
Mar-15	16/WSD/11 Replacement and rehabilitation of water mains at Peng Chau, Sunshine Island and Hei Ling Chau	Pipe Tech Ltd MIRDTEC HK Ltd	AECOM Asia Co Ltd	DSP 15 DSP 15 DSP 15	0.6 x 20 1.2 x 20 1.5 x 20	1 22 6
Mar-15	P552 Deep Cement Mixing Trial Works	Penta Ocean Construction Co Ltd	Atkins China Ltd & Mott MacDonald	DSP30 DSP30	8 x 20 8 x 25	2 6
Aug-15	Tsuen Wan West Station, TW-6 Property Development	Hip Hing Construction Co Ltd	Mannars Chan & Associates	DSP15	4 x 20	1
Dec-15	HK/2012/08 Wan Chai Development Phase II - Central Wan Chai Bypass at Wan Chai West	China State - Leader JV	AECOM Asia Co. Ltd	DSP30 DSP30 DSP15 DSP15 DSP15	10 x 20 5 x 10 10 x 20 9 x 20 8 x 20	6 6 5 5 5
Mar-16	Asia Pacific Gateway (APG) - Tseung Kwan O (Cape Collinson)	Maritime Mechanic Ltd	Environmental Resources Management	DSP15	14 x 12	20
Nov-16	Dredging works at Marina Cove	Fung Kau Kee Contractors Ltd		DSP15	5 x 20	2
Nov-16	HY/2012/08 Tuen Mun - Chek Lap Kok Link Northern Connection Sub-sea Tunnel Section	Crown Asia Engineering Ltd Dragages - Bouygues JV	AECOM Asia Co. Ltd	DSP15	8 x 20 9 x 20 10 x 20	5 35 5
Dec-16	C3203 3rd Runway System Project DCM Ground Improvement Works (Package 3)	Sambo E & C Co Ltd	Atkins China Ltd & Mott MacDonald	DSP 30 Barge Type	4 x 10 2 x 10 4 x 9 1.6 x 9 2.8 x 9 1.8 x 9 2 x 9	46 2 246 4 2 2 2
Dec-16	C3204 3rd Runway System Project DCM Ground Improvement Works (Package 4)	CRBC-Sambo JV	Atkins China Ltd & Mott MacDonald	DSP30	6 x 5.3 6 x 11.3 6 x 12.3 6 x 12.8 6 x 13.8 6 x 6	2 2 20 4 4 100
Jan-17	C3201 3rd Runway System Project DCM Ground Improvement Works (Package 1)	Penta Ocean-China State- Dong Ah JV	Atkins China Ltd & Mott MacDonald	DSP 30	6 x 8	154
Feb-17	P560 Aviation Fuel Pipeline Diversion Works	Kat Yue Construction Engineering Ltd	Mott MacDonald	DSP15	1.5 x 20	8
Apr-17	HKHA20120023 Public rental housing, Shek Mun Estate	Hin Sum Engineering Co Ltd	Wong & Ouyang (Building Services) Ltd	DSP / SG110	3 x 20	2
Jul-17	Refuse Boom at Tai O by World Wide Fund	World Wide Fund		DSP15	0.5 x 20	3
Aug-17	Lyric Theater Complex and Extended Basement Project for the WKCD Authority	Gammon Construction Ltd	AECOM Asia Co. Ltd / Mott Macdonald HK Ltd	DSP15	8 x 20	6

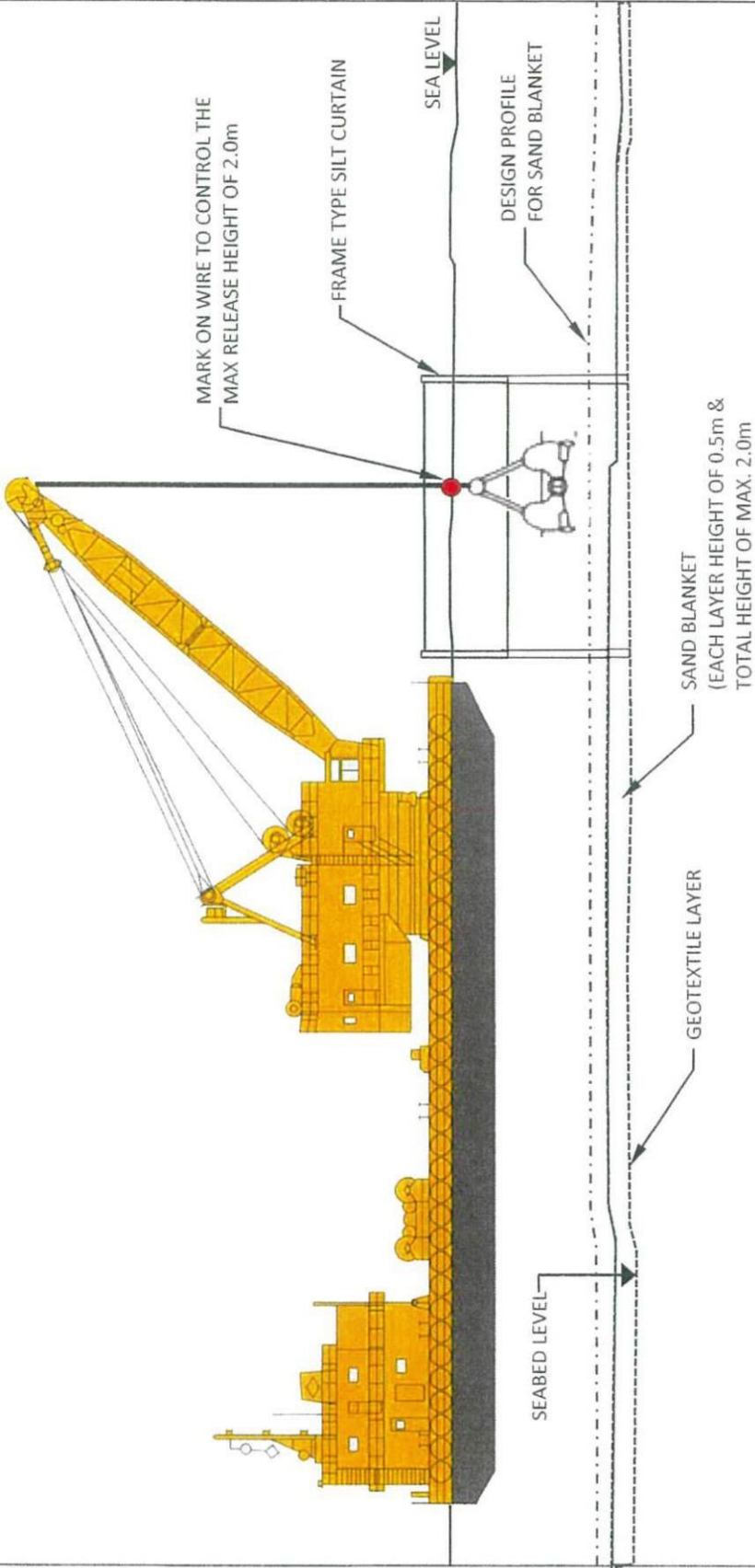
Appendix C

Layout of Silt Curtain

Appendix C1

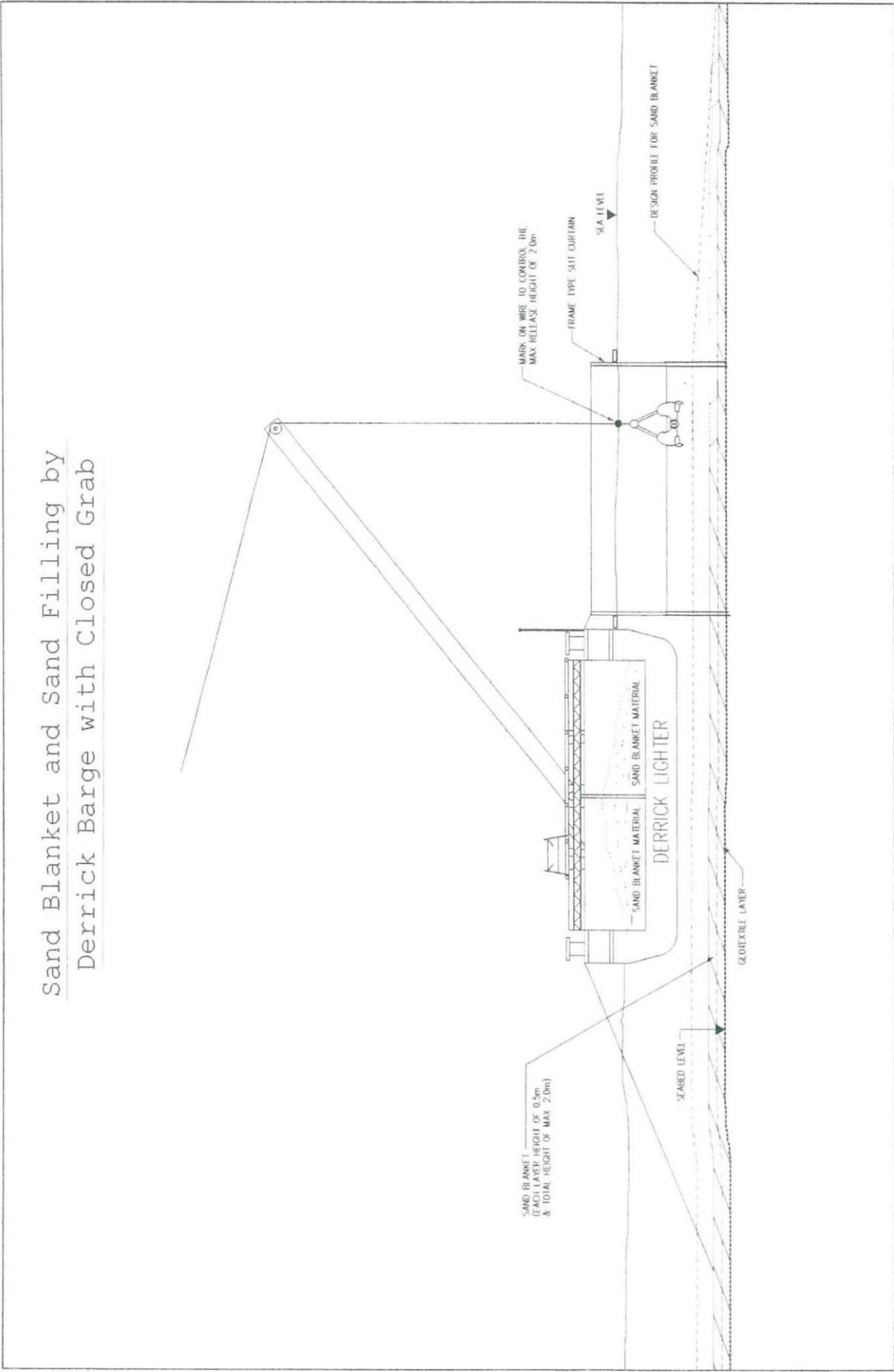
Localized Silt Curtain Arrangement for Dredge Barge with Closed Grab

Sand Blanket and Sand Filling by Dredge Barge with Close Grab



Appendix C2

Localized Silt Curtain Arrangement for Derrick Barge with Closed Grab

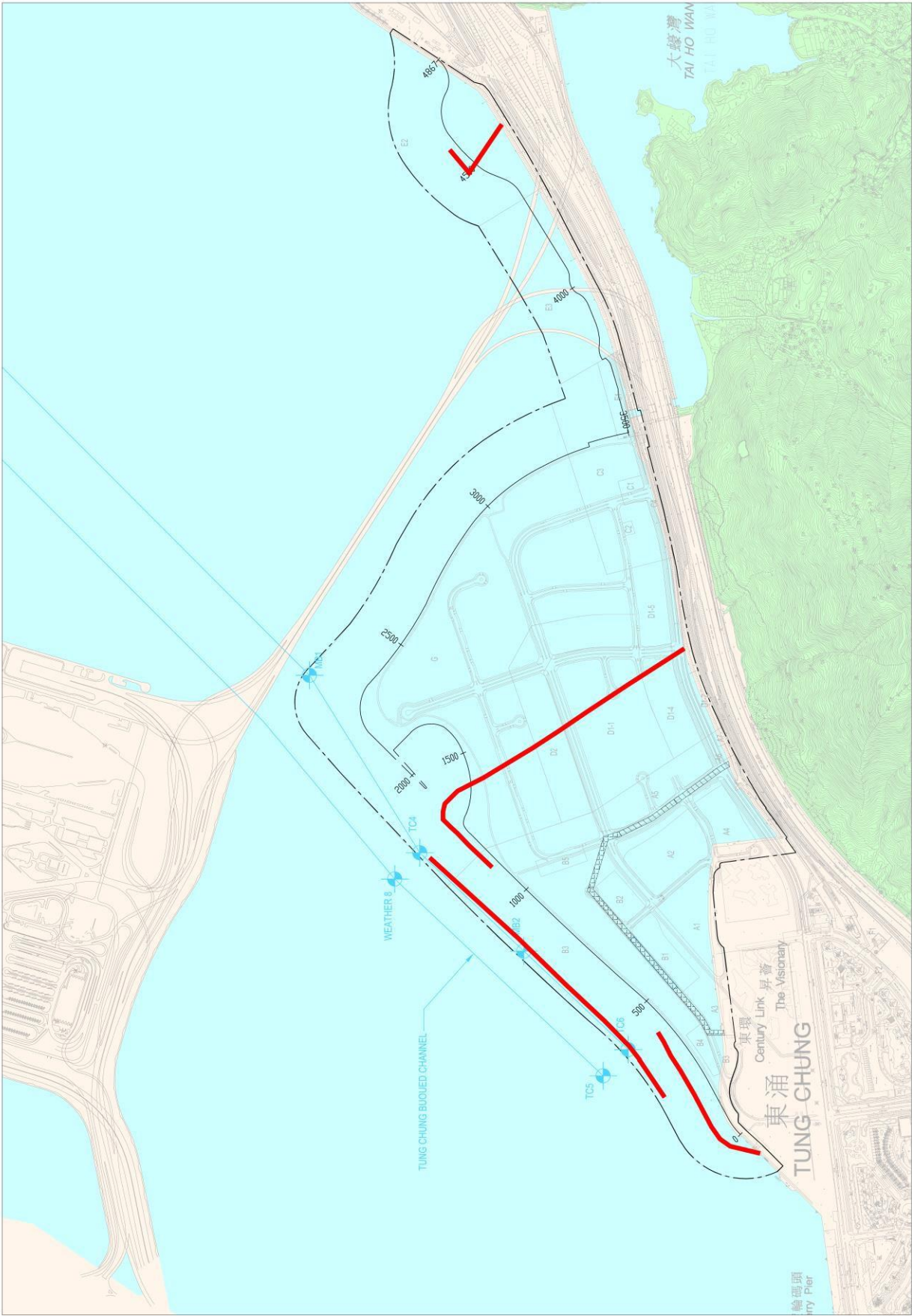


Appendix C3

Silt Curtain Layout for Protective Silt Curtain before Commencement of Construction Works

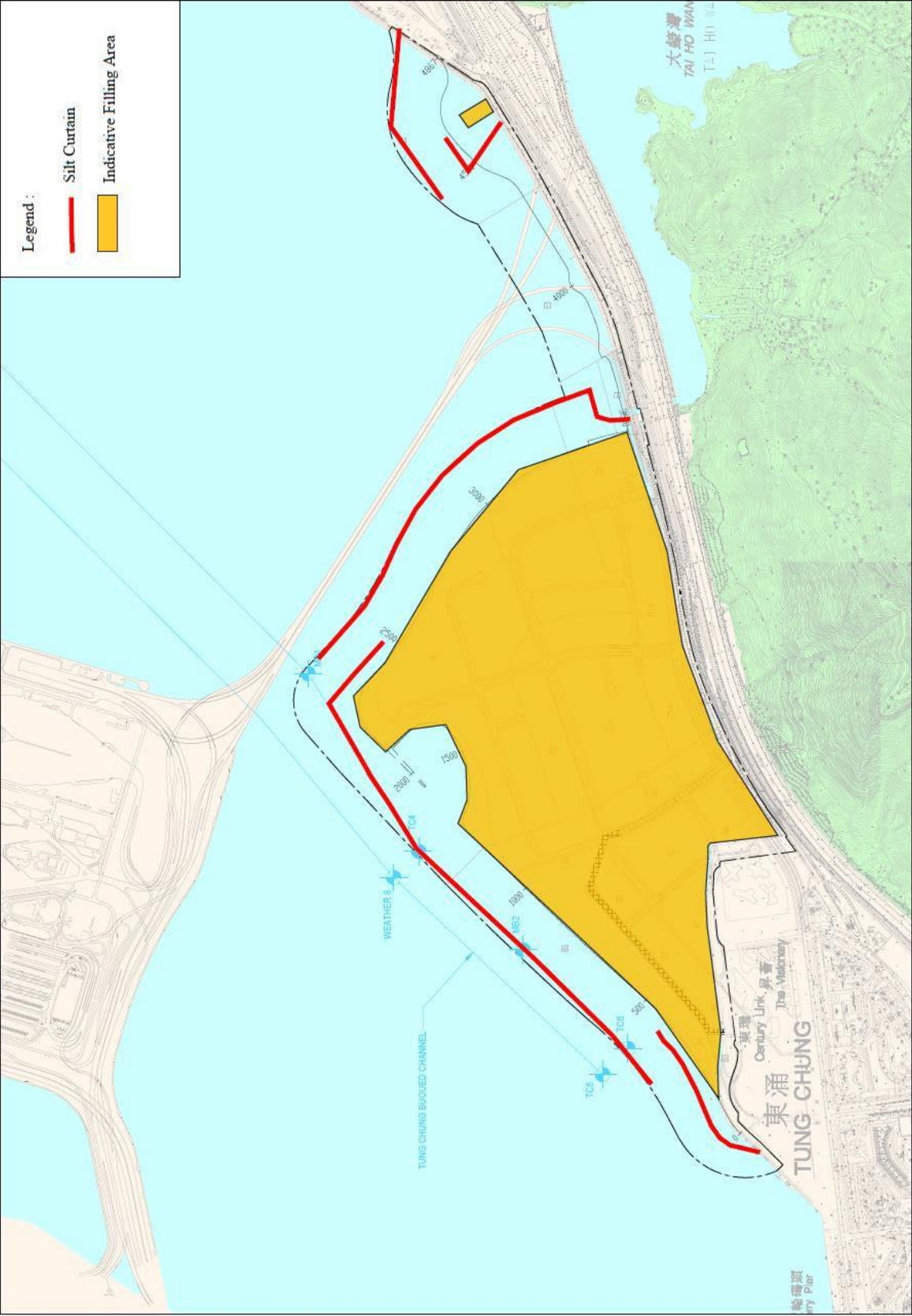
Appendix C4

Silt Curtain Layout during DCM Trial for DCM Trial Embankment (at the Works Area Near Tai Ho Wan)



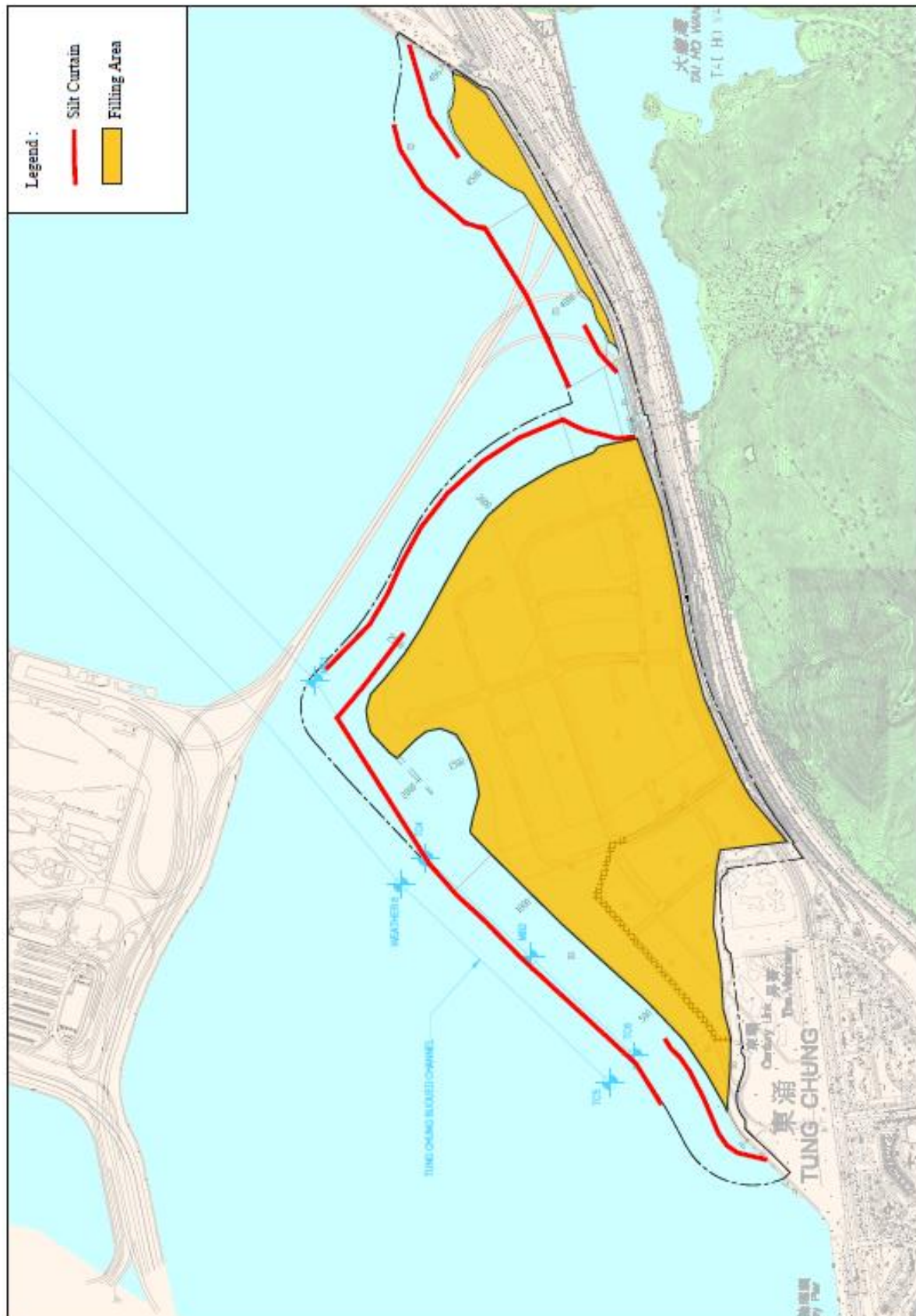
Appendix C5

Silt Curtain Layout during Reclamation Filling for DCM Trial Embankment (at the Works Area Near Tai Ho Wan)



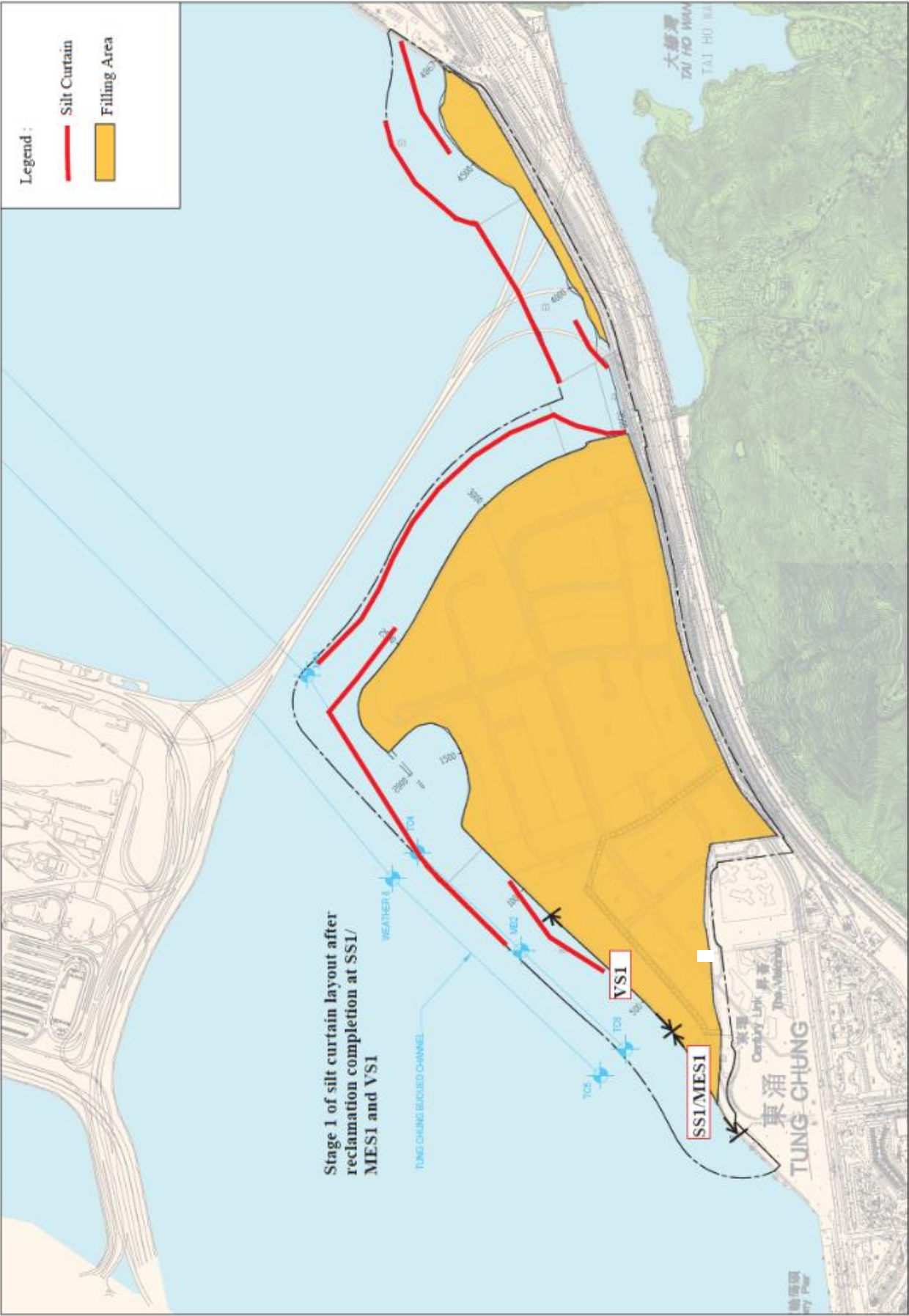
Appendix C6

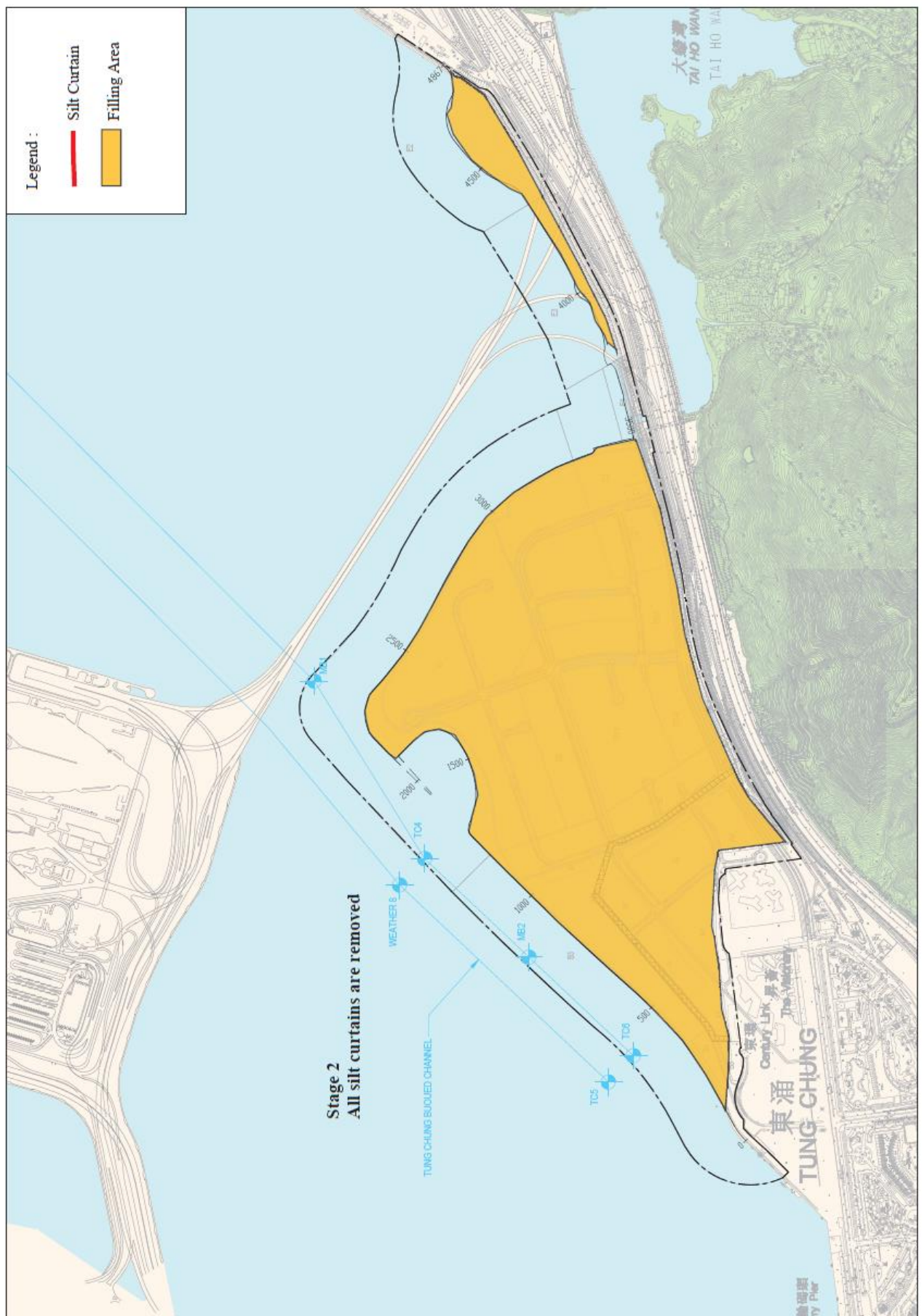
Silt Curtain Layout for the Perimeter Silt Curtain during all Reclamation Works



Appendix C7

Silt Curtain Layout for the Perimeter Silt Curtain after completion of Reclamation Works





Appendix D

Silt Curtain Inspection Checklist

Contract No. NL/2017/03

Tung Chung New Town Extension -
Reclamation and Advance Works

Client : Civil Engineering and Development Department

Consultant : AECOM

Main Contractor : Build King - SCT Joint Venture

Silt Curtain Daily Inspection Checklist

Silt Curtain ID : _____

Location : _____

Inspection Date and Time : _____

Item	Description	Condition		Immediate Action Required?*		Target Rectification Date	Remarks
		Yes	No	Yes	No		
1	Any floating debris/refuse within silt screen/curtain ?						
2	Supporting frame / buoys in good condition :						
3	Tying rope in good condition ?						
4	Geotextile intact and in good condition ?						
5	Any obstruction to water flow between geotextile ?						

Checked by : _____
On Behalf of Build King - SCT Joint Venture

Endorsed by : _____
On behalf of AECOM

*Note : For silt curtain with defects which need to be rectified immediately, related marine works have to be stopped until rectification works are completed to the satisfaction of the Supervisor.

Appendix E

Implementation Schedule of the Major Environmental Mitigation Measures

Implementation Schedule of the Major Environmental Mitigation Measures

SCDP Ref.	Recommended Major Environmental Mitigation Measures	Objectives of the Recommended Measures & Main Concerns to address	Implementation Agent	Location / Timing	Implementation Stage
S2.0	<u>Silt Curtain Deployment Programme</u> In case the silt curtain layout has to be updated due to potential work constraints or marine safety, the proposed silt curtain layout shall be reviewed and agreed by the Environmental Team and the Independent Environmental Checker as sufficient to control the potential water quality impact due to the associated marine works before implementation	Review on the proposed silt curtain layout	Contractor	Silt curtain deployment zone	Construction phase
S3.0	<u>Design of Silt Curtain</u> The floating single silt curtain consists of a layer of geotextile tied on 500mm diameter sub-buoys. The geotextile extended to the seabed level secured by steel chain ballast. The buoys will be further positioned by nylon ropes tied on nearby existing structures. Sufficient length of geotextile will be provided such that the silt curtain can be extended from the water surface to the seabed during high tide condition. The minimum overlapping length between the different sheet is 150m. Silt curtain (Model DSP15) with curtain depth of 7.4m (D=7.4m) and curtain strength 15 ton/m (Canvas (15ton/m)) is deployed in this project.	Minimize water quality impacts	Contractor	Silt curtain deployment zone	Construction phase
S4.0	<u>Silt Curtain Installation</u> i) Link up 500mm buoys together by a net ii) Tie up top end of the geotextile to the buoys net and the bottom end with steel chain ballast before transportation. iii) Transport the silt curtain to the location for fixing via a marine pontoon. iv) Refer to the Environmental Permit No. EP-519/2016 Clause 2.27, a dolphin exclusion zone of 250m shall be implemented around the reclamation site during the installation or redeployment of the perimeter silt curtain. Before the start of the installation work, Qualified Ecologists with dolphin monitoring experience shall scan the exclusion zone for at least 30 minutes. If dolphins are observed in the exclusion zone, the installation	Minimize water quality impacts	Contractor	Silt curtain deployment zone	Construction phase

SCDP Ref.	Recommended Major Environmental Mitigation Measures	Objectives of the Recommended Measures & Main Concerns to address	Implementation Agent	Location / Timing	Implementation Stage
	<p>work shall be delayed until the dolphins left the area.</p> <p>v) Workers tie the buoys to the water and then slowly put the geotextile with the steel chain ballast into sea.</p> <p>vi) Put the buoys to the water and then slowly put out the geotextile with the steel chain ballast into sea.</p> <p>vii) In order to maintain the position of the silt curtain especially at location with strong current, place concrete sinkers to the seabed if required and tie the silt curtain to the sinkers with nylon strings by divers.</p> <p>If dolphins are observed within the exclusion zone during the installation work, the relevant part of the work shall cease until the dolphins left the area.</p> <p>Once the perimeter silt curtains are installed or re-deployed, the Dolphin Watching Plan shall be implemented as part of the EM&A programme.</p>				
S5.0	<p><u>Operation and Maintenance of Silt Curtain</u></p> <p>i) On-board supervisors will be assigned to check the condition of the silt curtain before commencement of works every day. Completed inspection checklist will be kept on site for record purpose. Refer Appendix D for the sample of Silt Curtain Daily Inspection Checklist. Diver inspection will be arranged after adverse weather and when necessary.</p> <p>ii) For the tentative arrangement of silt curtain under adverse weather (e.g. Red or Black Rainstorm, Typhoon Signal No. 3 or above etc.), the silt curtain will not be temporary removed during adverse weather. However, related works will be suspended immediately if silt curtain is found any damaged. Immediate inspection of silt curtain after adverse weather is necessary. Checking procedures include (1) lift up the silt curtain for water by derrick barge, (2) sew (double-line sew) a new piece of geotextile to the existing geotextile to cover the damage area, (3) ensure sufficient overlapping length (150m) & width of gap</p>	Minimize water quality impacts	Contractor	Silt curtain deployment zone	Construction phase

SCDP Ref.	Recommended Major Environmental Mitigation Measures	Objectives of the Recommended Measures & Main Concerns to address	Implementation Agent	Location / Timing	Implementation Stage
	<p>(100m) and (4) diver inspection shall be carried out if necessary to inspect the installation and decommission of silt curtain to ensure proper installation and functioning of the silt curtain according to the design drawings. Nearby marine works will resume after repairing of the damaged silt curtains.</p> <p>iii) Refuse around the silt curtain will be collected at regular intervals on a daily basis so that water behind the silt curtains will be kept free from floating debris.</p> <p>iv) Sufficient spare geotextile will be kept on site for replacing of damaged silt curtains. The spare geotextile shall be kept in place to avoid direct contact with water and sunlight.</p> <p>When insignificant defect of silt curtain gap less than one unit length of the silt curtain (around 20m), BKSCITJV Inspection team will inform BKSCITJV Marine and Environmental Department, and arrange resource to carry out repairing work.</p> <p>When significant defect of silt curtain gap greater than one unit length of the silt curtain (around 20m), the reporting mechanism specified in Section 5 should be implemented.</p>				
S6.0	<p><u>Removal of Silt Curtain</u></p> <p>Prior to removal of silt curtains, all marine works for which the silt curtains are deployed shall be stopped and visual inspection of the water quality within the area protected by silt curtains shall be conducted to confirm no sediment plume remaining within the works area before commencing silt curtain removal.</p> <p>Floating silt curtains shall be removed by detaching the chain connecting the silt curtain to the anchors. Care should be taken to protect the silt curtain skirt from damage as it is dragged from the water. The remaining anchors shall be individually connected to the crane by divers and carefully lifted off the seabed for recovery onto the barge to minimize the disturbance to the seabed.</p>	Minimize water quality impacts	Contractor	Silt curtain deployment zone	Construction phase