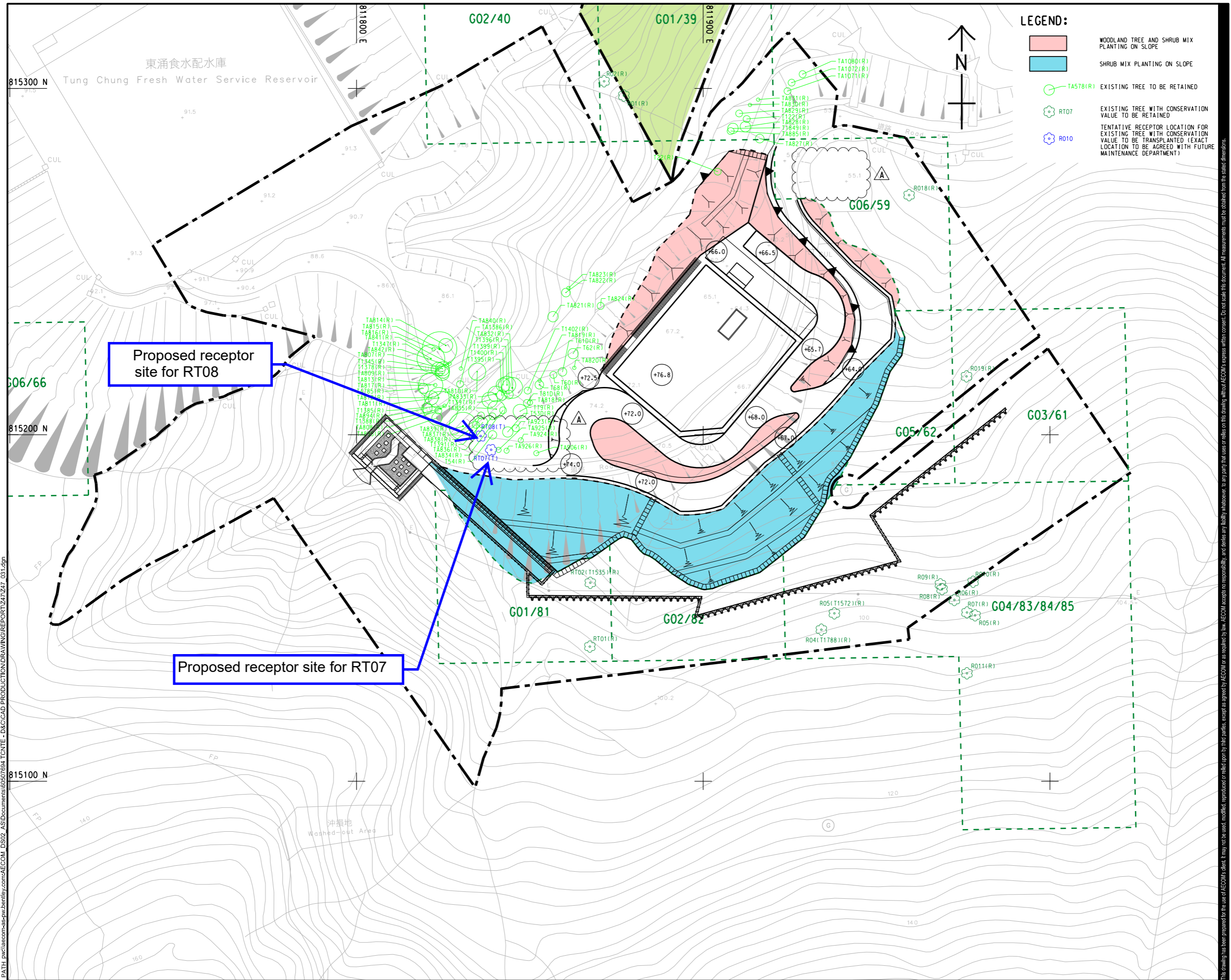


ISO A1 594mm x 841mm  
 Approved:  
 Checked:  
 Designer:  
 Project Management Initials:  
 11-November-2020  
 PATH: p:\aecom\as-pw\benley.com\AECOM\_DSO2\_ASI\Documents\60507694\_TC\NTE - D&C\CAD PRODUCTION\DRAWING\REPORT\Z47\_Z47\_031.dgn  
 Plot File by: Shuyun.Wang@aecom.com



**LEGEND:**

- WOODLAND TREE AND SHRUB MIX PLANTING ON SLOPE
- SHRUB MIX PLANTING ON SLOPE
- TA578(R) EXISTING TREE TO BE RETAINED
- RT07 EXISTING TREE WITH CONSERVATION VALUE TO BE RETAINED
- R010 TENTATIVE RECEPTOR LOCATION FOR EXISTING TREE WITH CONSERVATION VALUE TO BE TRANSPLANTED (EXACT LOCATION TO BE AGREED WITH FUTURE MAINTENANCE DEPARTMENT)

**AECOM**

**PROJECT**  
 TUNG CHUNG NEW TOWN EXTENSION (EAST) - DESIGN AND CONSTRUCTION

**CLIENT**  
 土木工程拓展署  
 CEDD Civil Engineering and Development Department

**CONSULTANT**  
 AECOM Asia Company Ltd.  
 www.aecom.com

**SUB-CONSULTANTS**  
 分判工程師/公司

**ISSUE/REVISION**

NO.	DATE	DESCRIPTION	CHK.
A	NOV. 20	REVISED LAYOUT	CC
-	OCT. 20	FIRST ISSUE	CC

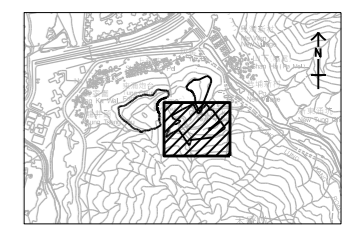
**STATUS**

--

**SCALE**      **DIMENSION UNIT**

A1 1:500	METRES
----------	--------

**KEY PLAN** A1 1:20000



<b>PROJECT NO.</b> 60507694	<b>CONTRACT NO.</b> CE 69/2015 (CE)
--------------------------------	--

**SHEET TITLE**  
 LOCATION OF RECEPTOR SITE FOR THE TRANSPLANTED PLANTS OF CONSERVATION IMPORTANCE

**SHEET NUMBER**  
 60507694/Z47/FIGURE 3

This drawing has been prepared for the use of AECOM's client. It may not be used, modified, reproduced or relied upon by third parties, except as agreed by AECOM or as required by law. AECOM accepts no responsibility, and disclaims any liability whatsoever, for any party that uses or relies on this drawing, without AECOM's express written consent. All measurements must be obtained from the stated dimensions.