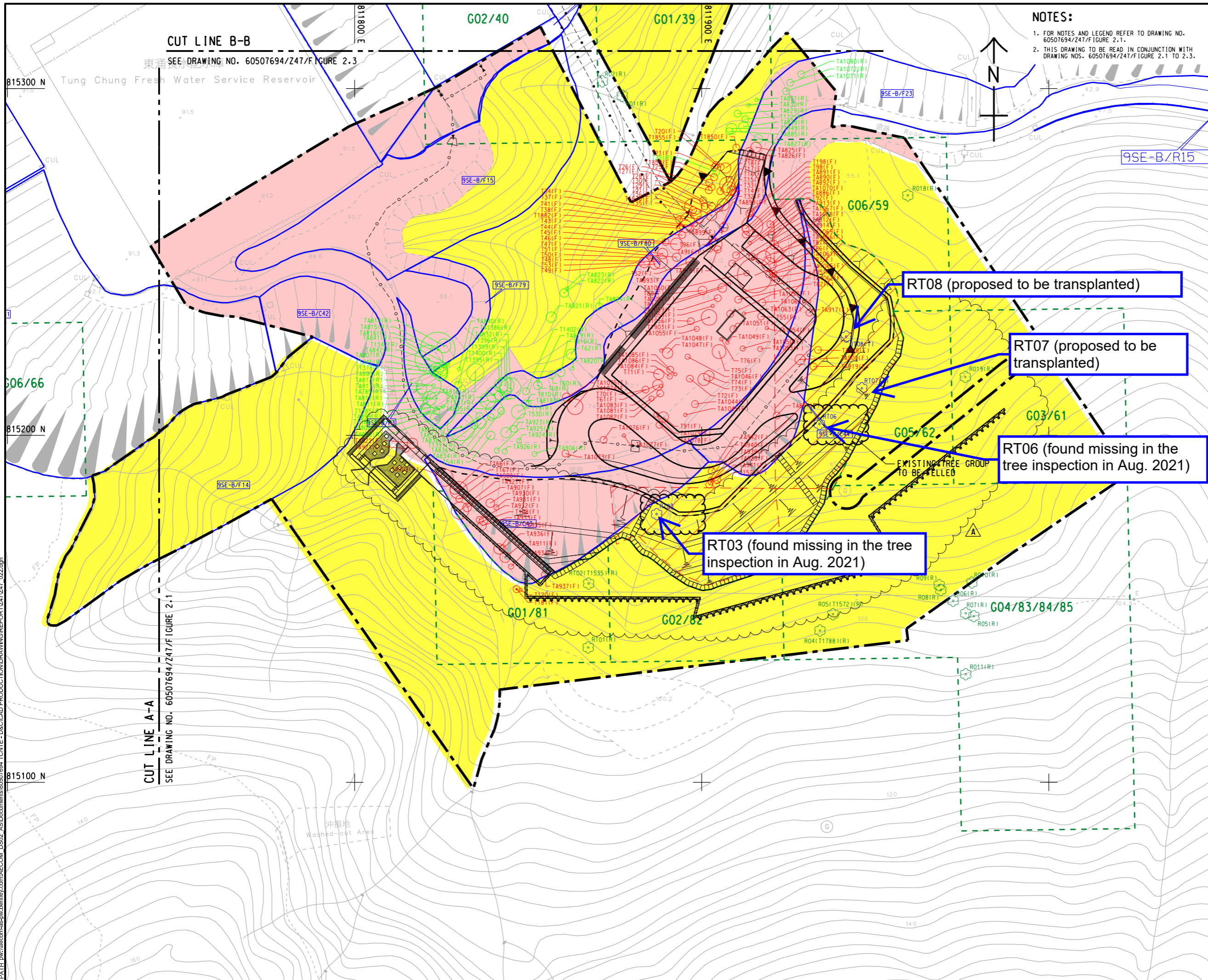


Plot File by: Shuyuan.Wang@aecom.com 11-November-2020
 PATH: p:\aecom\p-w\benliyer.com\AECOM_DSO2_ASI\Documents\60507694_TCNTE - D&C\CAD PRODUCTION\DRAWING\REPORT\Z47_Z47_022.dgn
 ISO A1 594mm x 841mm
 Approved: _____
 Checked: _____
 Designer: _____
 Project Management Initials: _____



NOTES:
 1. FOR NOTES AND LEGEND REFER TO DRAWING NO. 60507694/Z47/F/FIGURE 2.1.
 2. THIS DRAWING TO BE READ IN CONJUNCTION WITH DRAWING NOS. 60507694/Z47/F/FIGURE 2.1 TO 2.3.



PROJECT
 TUNG CHUNG NEW TOWN EXTENSION (EAST) - DESIGN AND CONSTRUCTION

CLIENT
 土木工程拓展署
 CEDD Civil Engineering and Development Department

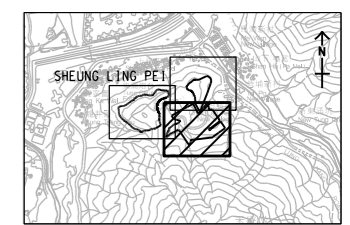
CONSULTANT
 AECOM Asia Company Ltd.
 www.aecom.com

SUB-CONSULTANTS
 分列工程師有限公司

ISSUE/REVISION

NO.	DATE	DESCRIPTION	CHK.
A	NOV. 20	REVISED LAYOUT	CC
-	OCT. 20	FIRST ISSUE	CC

SCALE **DIMENSION UNIT**
 A1 1:500 METRES



PROJECT NO. **CONTRACT NO.**
 60507694 CE 69/2015 (CE)

SHEET TITLE
 LOCATION AND RECOMMENDATION OF RECORDED PLANTS OF CONSERVATION IMPORTANCE

SHEET NUMBER
 60507694/Z47/FIGURE 2.2

This drawing has been prepared for the use of AECOM's client. It may not be used, modified, reproduced or relied upon by third parties, except as agreed by AECOM or as required by law. AECOM accepts no responsibility, and declines any liability whatsoever, for any party that uses or relies on this drawing, without AECOM's express written consent. All measurements must be obtained from the stated dimensions.