



ANNEX F3

MONITORING RESULTS FOR NOISE

Table F3.1 Data for Noise Monitoring at Station NMS-CA-1A during Normal Working Hours (0700-1900 hours)

Date & Time	L _{eq} (5min)	L ₁₀	L ₉₀	L _{eq} (30min)
8/3/2024 13:49	64.2	66.7	60.9	64.9
8/3/2024 13:54	63.7	65.8	59.4	
8/3/2024 13:59	66.1	67.1	59.2	
8/3/2024 14:04	65.0	67.2	60.1	
8/3/2024 14:09	63.9	66.0	59.8	
8/3/2024 14:14	65.9	66.6	60.0	
8/9/2024 9:15	65.3	68.7	60.0	65.7
8/9/2024 9:20	65.7	69.1	60.6	
8/9/2024 9:25	64.8	67.4	60.0	
8/9/2024 9:30	66.9	69.3	60.8	
8/9/2024 9:35	66.6	69.6	60.2	
8/9/2024 9:40	64.5	66.0	60.9	
8/15/2024 13:30	65.8	68.5	61.6	65.5
8/15/2024 13:35	66.3	68.9	61.9	
8/15/2024 13:40	65.2	67.9	60.6	
8/15/2024 13:45	64.9	67.9	60.5	
8/15/2024 13:50	66.1	68.9	60.9	
8/15/2024 13:55	64.6	67.7	60.7	
8/21/2024 9:06	66.2	67.9	63.8	67.5
8/21/2024 9:11	66.4	68.3	63.9	
8/21/2024 9:16	66.0	68.0	63.6	
8/21/2024 9:21	66.3	68.1	64.0	
8/21/2024 9:26	68.7	70.3	66.5	
8/21/2024 9:31	69.7	71.7	66.5	
8/27/2024 14:54	63.6	66.5	58.0	64.5
8/27/2024 14:59	65.7	68.6	60.6	
8/27/2024 15:04	63.8	66.3	60.3	
8/27/2024 15:09	65.1	67.7	60.2	
8/27/2024 15:14	63.3	65.5	60.1	
8/27/2024 15:19	64.8	67.1	59.8	

Figure F3.1 Graphical Presentation for Noise Monitoring at Station NMS-CA-1A

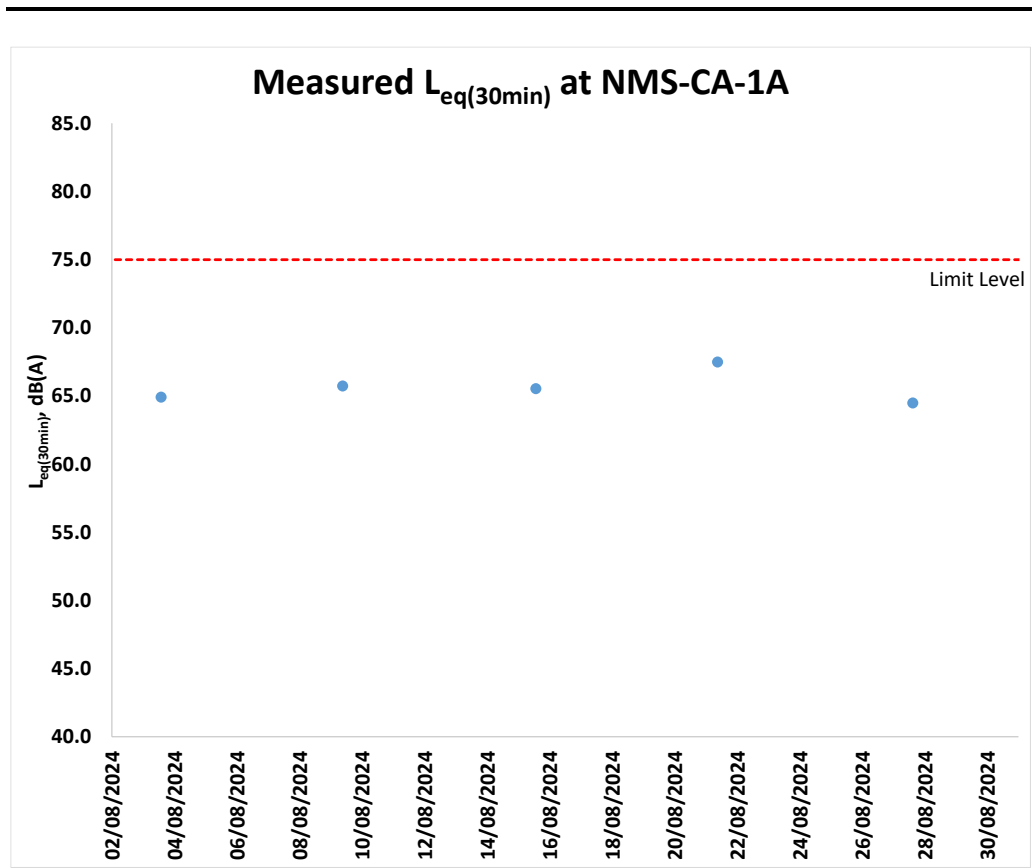


Table F3.2 Data for Noise Monitoring at Station NMS-CA-4 during Normal Working Hours (0700-1900 hours)

Date & Time	L _{eq} (5min)	L ₁₀	L ₉₀	L _{eq} (30min)
8/3/2024 13:03	67.5	69.3	64.1	68.2
8/3/2024 13:08	69.4	70.0	65.3	
8/3/2024 13:13	68.4	70.4	66.0	
8/3/2024 13:18	68.1	70.3	65.3	
8/3/2024 13:23	67.9	69.8	65.4	
8/3/2024 13:28	67.5	69.4	65.6	68.5
8/9/2024 10:01	69.2	71.4	66.3	
8/9/2024 10:06	69.0	71.3	66.3	
8/9/2024 10:11	69.6	70.7	66.4	
8/9/2024 10:16	68.4	70.1	66.3	
8/9/2024 10:21	67.0	68.4	65.3	69.9
8/9/2024 10:26	67.4	69.0	65.1	
8/15/2024 13:43	68.4	70.4	66.6	
8/15/2024 13:48	69.5	71.0	67.4	
8/15/2024 13:53	70.6	72.6	68.1	
8/15/2024 13:58	72.4	75.2	68.0	68.7
8/15/2024 14:03	69.6	72.4	63.9	
8/15/2024 14:08	66.9	70.1	62.3	
8/21/2024 9:43	68.7	69.6	63.3	
8/21/2024 9:48	68.4	70.6	64.5	
8/21/2024 9:53	68.9	70.5	65.0	65.6
8/21/2024 9:58	67.0	69.4	62.7	
8/21/2024 10:03	68.6	71.3	63.3	
8/21/2024 10:08	70.0	71.9	62.9	
8/27/2024 15:30	66.1	67.6	63.8	
8/27/2024 15:35	66.7	68.4	63.7	65.6
8/27/2024 15:40	64.3	65.8	62.8	
8/27/2024 15:45	64.7	65.9	62.8	
8/27/2024 15:50	66.6	69.0	63.5	
8/27/2024 15:55	64.7	66.3	63.3	

Figure F3.2 Graphical Presentation for Noise Monitoring at Station NMS-CA-4

