

Annex H2

Transplanted Plant Species of Conservation Importance Monitoring



Photo 01: Tree tag of G62/ RT-07



Photo 02: Root collar of G62/ RT-07



Photo 03: Crown condition of G62/RT-07



Photo 04: Whole view of G62/RT-07



Photo 05: Tree tag of G62/ RT-08



Photo 06: Root collar of G62/RT-08



Photo 07: Crown condition of G62/RT-08

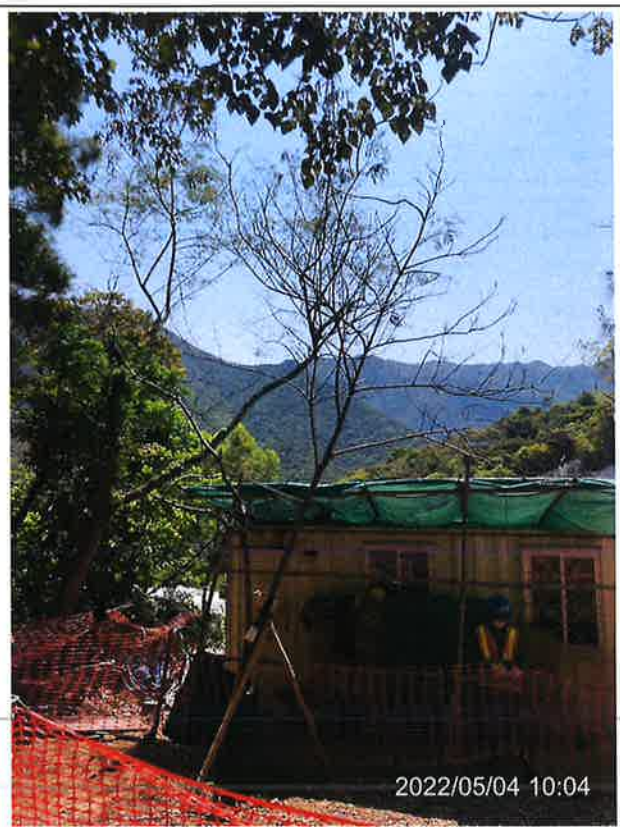


Photo 08: Whole view for G62/RT-08

Inspection date: 11 May 2022



Photo 01: Tree tag of G62/ RT-07



Photo 02: Root collar of G62/ RT-07



Photo 03: Crown condition of G62/RT-07

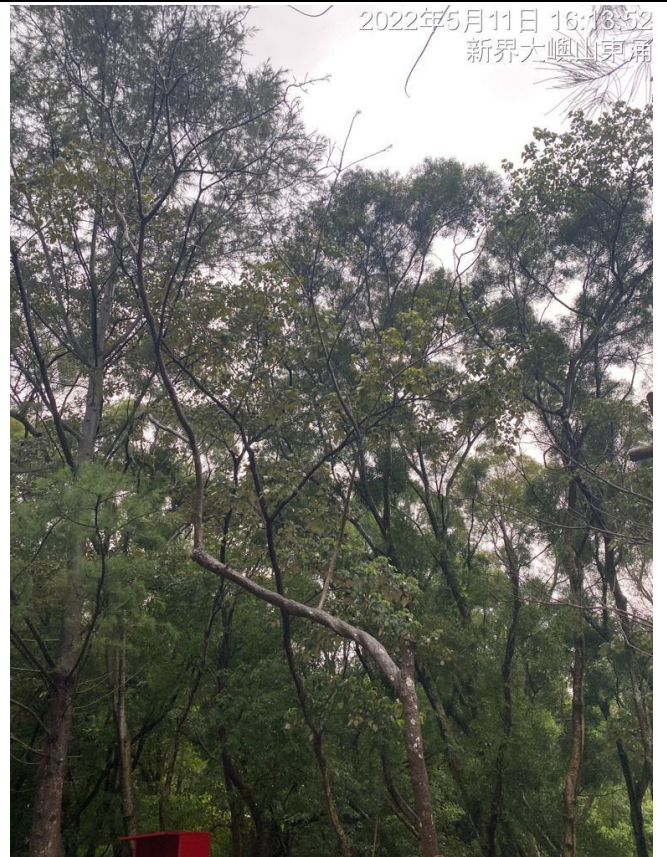


Photo 04: Whole view of G62/RT-07



Photo 05: Tree tag of G62/ RT-08



Photo 06: Root collar of G62/RT-08

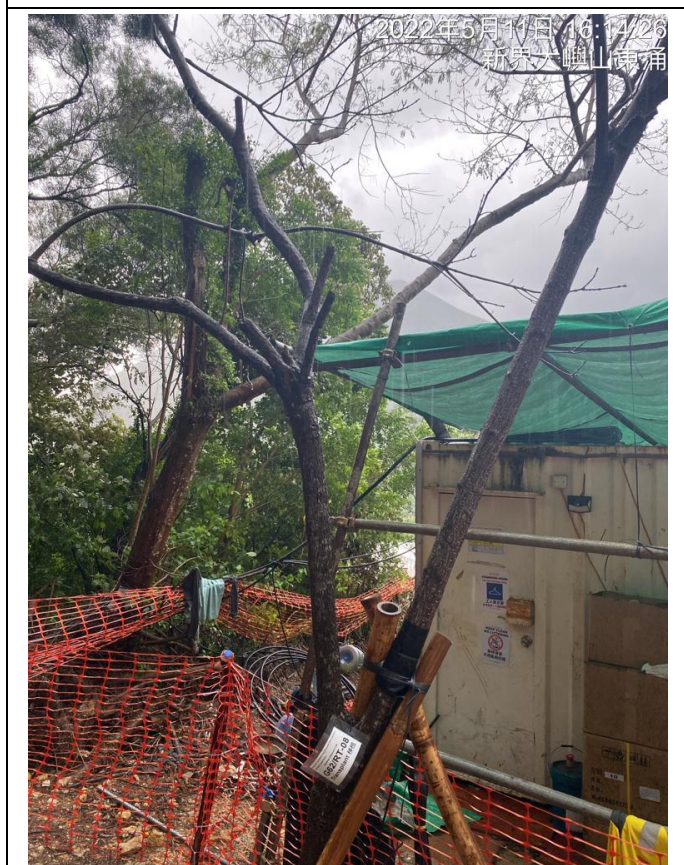


Photo 07: Crown condition of G62/RT-08

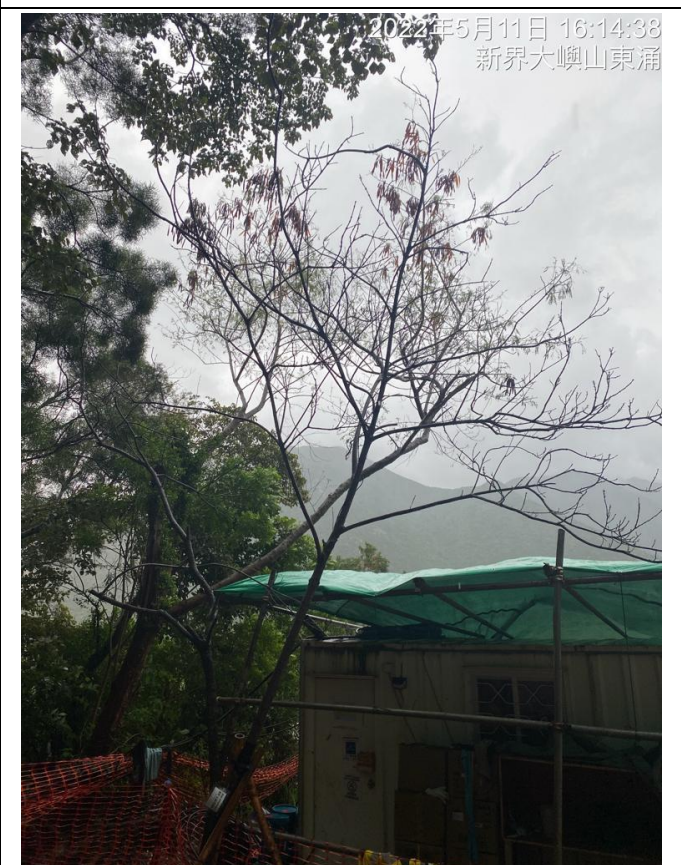


Photo 08: Whole view for G62/RT-08

Inspection date: 18 May 2022

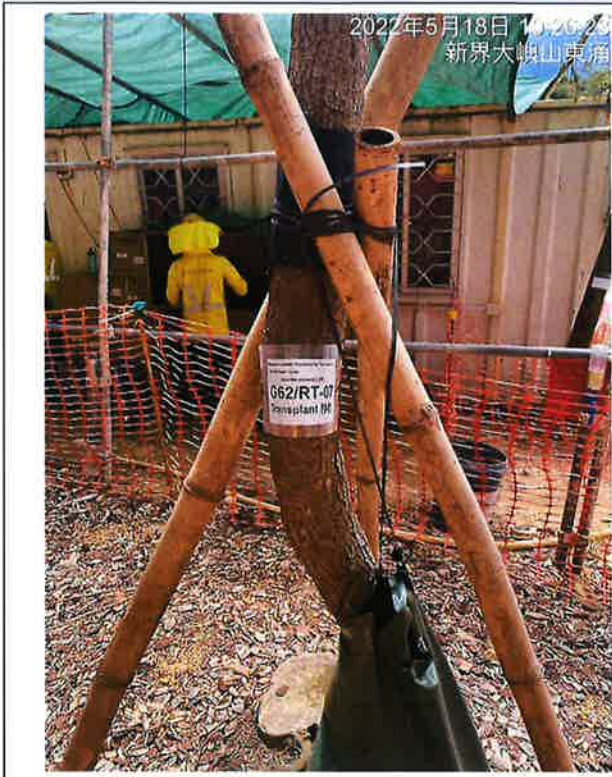


Photo 01: Tree tag of G62/ RT-07



Photo 02: Root collar of G62/ RT-07



Photo 03: Crown condition of G62/RT-07



Photo 04: Whole view of G62/RT-07



Photo 05: Tree tag of G62/ RT-08



Photo 06: Root collar of G62/RT-08



Photo 07: Crown condition of G62/RT-08



Photo 08: Whole view for G62/RT-08

Inspection date: 1 June 2022



Photo 01: Tree tag of G62/ RT-07



Photo 02: Root collar of G62/ RT-07



Photo 03: Crown condition of G62/RT-07



Photo 04: Whole view of G62/RT-07



Photo 05: Tree tag of G62/ RT-08



Photo 06: Root collar of G62/RT-08

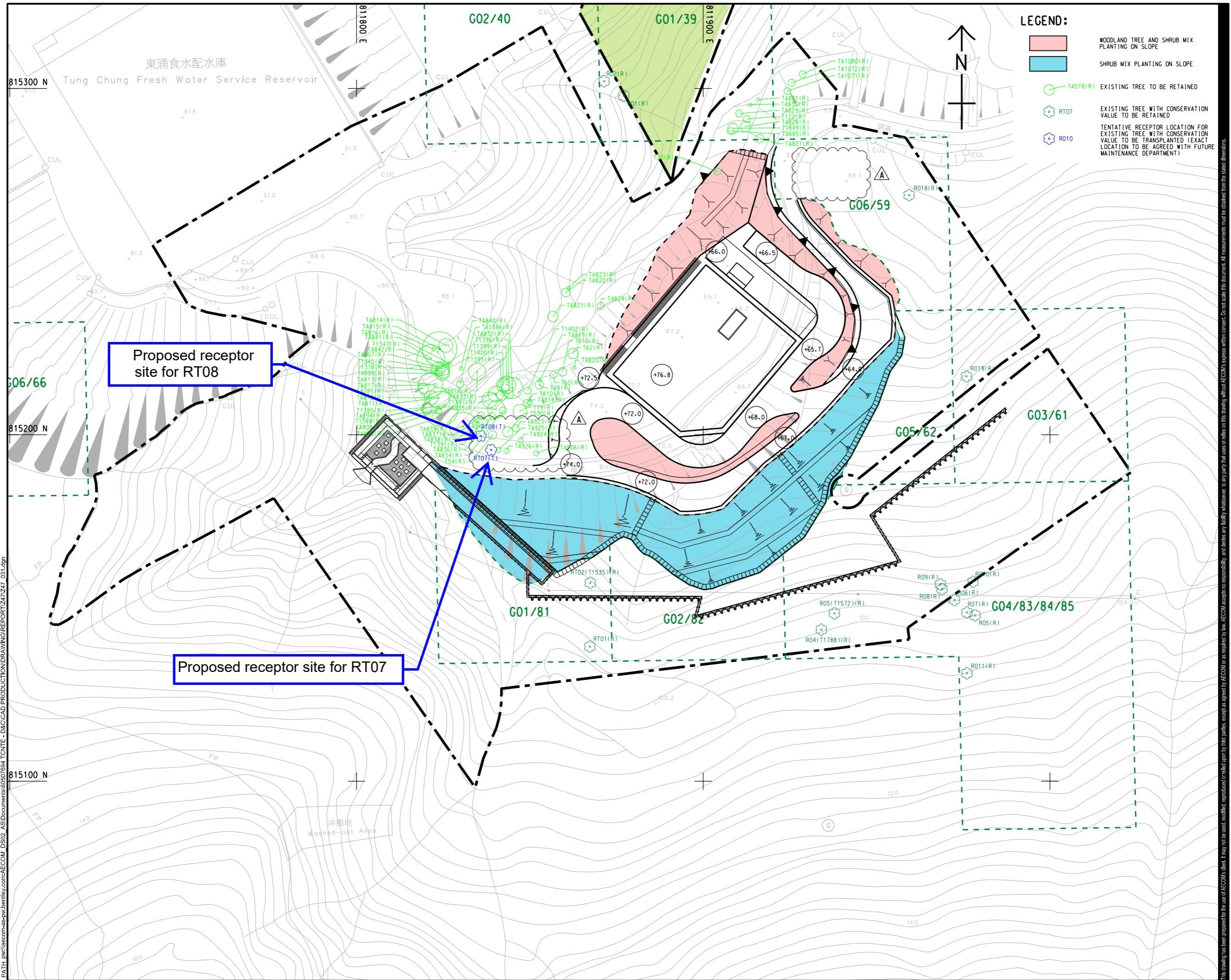


Photo 07: Crown condition of G62/RT-08



Photo 08: Whole view for G62/RT-08

ISO A1 594mm x 841mm
 Approved:
 Checked:
 Designer:
 Project Management Initials:
 11-November-2020
 PATH: p:\aecom\p-w\benley.com\AECOM_DSO2_ASI\Documents\60507694_TC\NTE - D&C\CAD PRODUCTION\DRAWING\REPORT\Z47_Z47_031.dgn
 Plot File by: Shuyun.Wang@aecom.com
 This drawing has been prepared for the use of AECOM's client. It may not be used, modified, reproduced or relied upon by third parties, except as agreed by AECOM or as required by law. AECOM accepts no responsibility, and disclaims any liability whatsoever, for any part that is less or relies on this drawing, without AECOM's express written consent. All measurements must be obtained from the stated dimensions.



LEGEND:

- WOODLAND TREE AND SHRUB MIX PLANTING ON SLOPE
- SHRUB MIX PLANTING ON SLOPE
- TA578(R) EXISTING TREE TO BE RETAINED
- ⊗ RT07 EXISTING TREE WITH CONSERVATION VALUE TO BE RETAINED
- ⊗ R010 TENTATIVE RECEPTOR LOCATION FOR EXISTING TREE WITH CONSERVATION VALUE TO BE TRANSPLANTED (EXACT LOCATION TO BE AGREED WITH FUTURE MAINTENANCE DEPARTMENT)

AECOM

PROJECT
 TUNG CHUNG NEW TOWN EXTENSION (EAST) - DESIGN AND CONSTRUCTION

CLIENT
 土木工程拓展署
 CEDD Civil Engineering and Development Department

CONSULTANT
 AECOM Asia Company Ltd.
 www.aecom.com

SUB-CONSULTANTS
 分判工程師/顧問

ISSUE/REVISION

NO.	DATE	DESCRIPTION	CHK.
A	NOV. 20	REVISED LAYOUT	CC
-	OCT. 20	FIRST ISSUE	CC

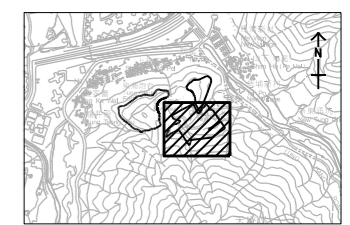
STATUS

--	--

SCALE **DIMENSION UNIT**

A1 1:500	METRES
----------	--------

KEY PLAN A1 1:20000



PROJECT NO. 60507694	CONTRACT NO. CE 69/2015 (CE)
--------------------------------	--

SHEET TITLE
 LOCATION OF RECEPTOR SITE FOR THE TRANSPLANTED PLANTS OF CONSERVATION IMPORTANCE

SHEET NUMBER
 60507694/Z47/FIGURE 3