

Annex F3

Monitoring Results for Noise

Table F3.1 Data for Noise Monitoring at Station NMS-CA-1A during Normal Working Hours (0700-1900 hours)

Date & Time	L _{eq} (5min)	L ₁₀	L ₉₀	L _{eq} (30min)
2021-08-02 8:43	63.0	66.4	57.2	65.7
2021-08-02 8:48	66.1	68.0	58.2	
2021-08-02 8:53	63.1	65.6	57.4	
2021-08-02 8:58	67.5	70.6	57.9	
2021-08-02 9:03	66.1	68.5	61.6	
2021-08-02 9:08	66.3	69.1	59.4	
2021-08-07 8:47	65.6	67.9	61.0	65.5
2021-08-07 8:52	64.1	67.1	57.7	
2021-08-07 8:57	64.1	68.2	55.6	
2021-08-07 9:02	64.0	66.0	56.0	
2021-08-07 9:07	66.5	69.7	56.2	
2021-08-07 9:12	67.5	69.9	62.3	
2021-08-13 8:51	67.0	70.3	59.1	66.1
2021-08-13 8:56	66.0	69.6	59.5	
2021-08-13 9:01	66.8	67.6	58.1	
2021-08-13 9:06	66.0	69.8	58.9	
2021-08-13 9:11	64.5	67.7	57.5	
2021-08-13 9:16	65.9	68.6	58.3	
2021-08-19 9:00	66.0	68.4	61.4	66.8
2021-08-19 9:05	65.8	68.2	61.6	
2021-08-19 9:10	65.2	68.0	60.1	
2021-08-19 9:15	67.1	70.3	59.6	
2021-08-19 9:20	68.5	70.7	64.1	
2021-08-19 9:25	67.2	69.3	61.4	
2021-08-25 8:52	67.7	69.9	60.6	67.4
2021-08-25 8:57	67.8	70.5	62.8	
2021-08-25 9:02	66.8	70.6	59.0	
2021-08-25 9:07	67.7	70.0	60.7	
2021-08-25 9:12	67.2	69.2	60.6	
2021-08-25 9:17	67.3	70.5	59.5	
2021-08-31 8:50	66.5	69.4	61.6	66.7
2021-08-31 8:55	65.2	67.7	61.6	
2021-08-31 9:00	66.5	69.3	62.5	
2021-08-31 9:05	67.7	70.5	62.9	
2021-08-31 9:10	67.7	69.6	63.4	
2021-08-31 9:15	66.4	69.2	63.3	

Figure F3.1 Graphical Presentation for Noise Monitoring at Station NMS-CA-1A

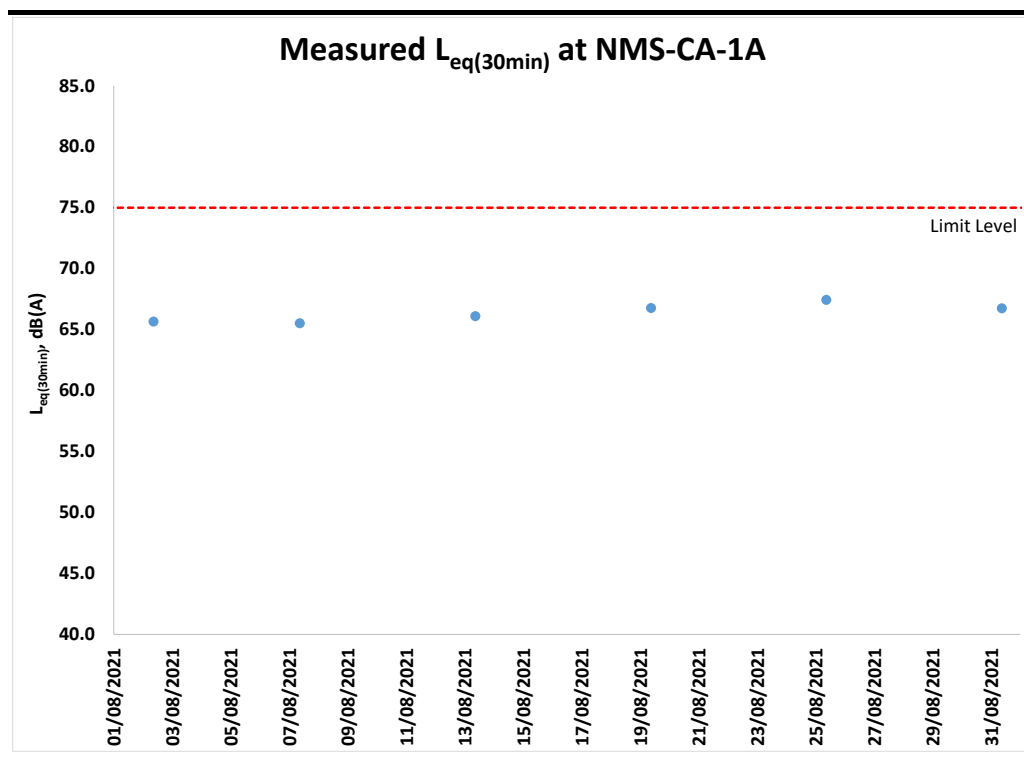


Table F3.2 Data for Noise Monitoring at Station NMS-CA-4 during Normal Working Hours (0700-1900 hours)

Date & Time	L _{eq} (5min)	L ₁₀	L ₉₀	L _{eq} (30min)
2021-08-02 8:05	64.7	68.2	60.0	64.3
2021-08-02 8:10	64.8	68.1	59.8	
2021-08-02 8:15	62.3	63.8	60.7	
2021-08-02 8:20	63.2	65.7	60.3	
2021-08-02 8:25	66.3	68.5	61.3	
2021-08-02 8:30	63.4	65.6	60.8	65.9
2021-08-07 8:07	64.6	67.1	62.2	
2021-08-07 8:12	65.3	68.6	62.2	
2021-08-07 8:17	66.4	69.0	62.5	
2021-08-07 8:22	67.8	69.0	63.6	
2021-08-07 8:27	65.9	67.7	63.9	66.0
2021-08-07 8:32	64.6	66.0	63.3	
2021-08-13 8:15	64.4	67.2	61.3	
2021-08-13 8:20	67.5	70.1	62.3	
2021-08-13 8:25	64.6	66.7	62.1	
2021-08-13 8:30	66.2	68.4	62.7	65.3
2021-08-13 8:35	66.9	68.8	63.6	
2021-08-13 8:40	65.4	67.1	63.3	
2021-08-19 8:17	65.8	70.1	59.8	
2021-08-19 8:22	62.5	65.1	59.3	
2021-08-19 8:27	62.8	65.5	60.0	66.8
2021-08-19 8:32	66.7	69.0	60.6	
2021-08-19 8:37	66.1	68.5	60.9	
2021-08-19 8:42	65.9	67.5	63.6	
2021-08-25 8:10	65.8	69.6	60.2	
2021-08-25 8:15	67.3	69.9	62.3	65.3
2021-08-25 8:20	66.9	69.7	62.5	
2021-08-25 8:25	67.2	69.9	63.0	
2021-08-25 8:30	67.7	70.7	63.3	
2021-08-25 8:35	65.2	67.4	61.1	
2021-08-31 8:09	65.2	68.6	61.0	65.3
2021-08-31 8:14	63.2	66.4	59.3	
2021-08-31 8:19	64.2	67.3	60.1	
2021-08-31 8:24	65.7	67.9	61.4	
2021-08-31 8:29	65.7	69.3	61.5	
2021-08-31 8:34	66.7	69.9	61.3	

Figure F3.2 Graphical Presentation for Noise Monitoring at Station NMS-CA-4

