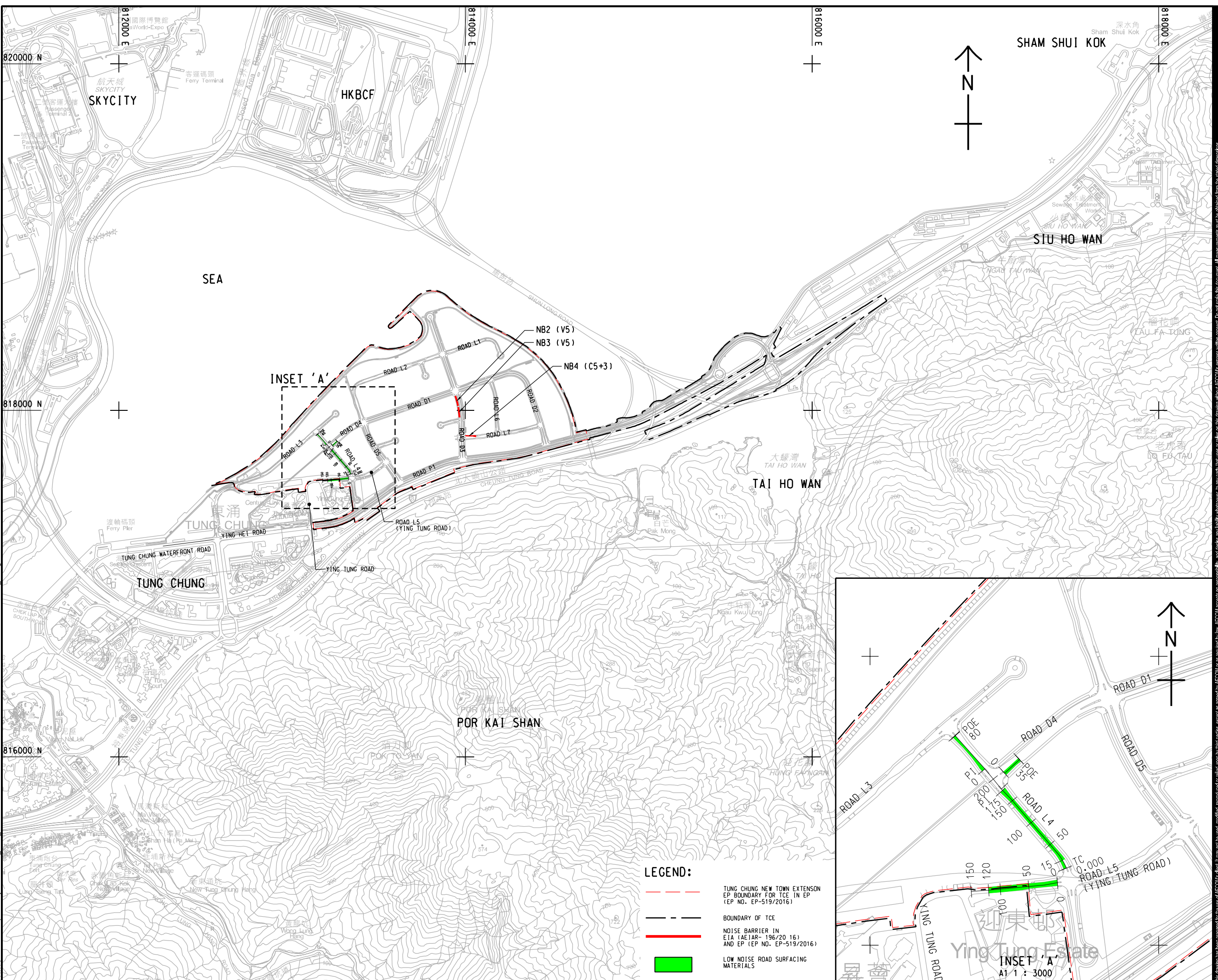
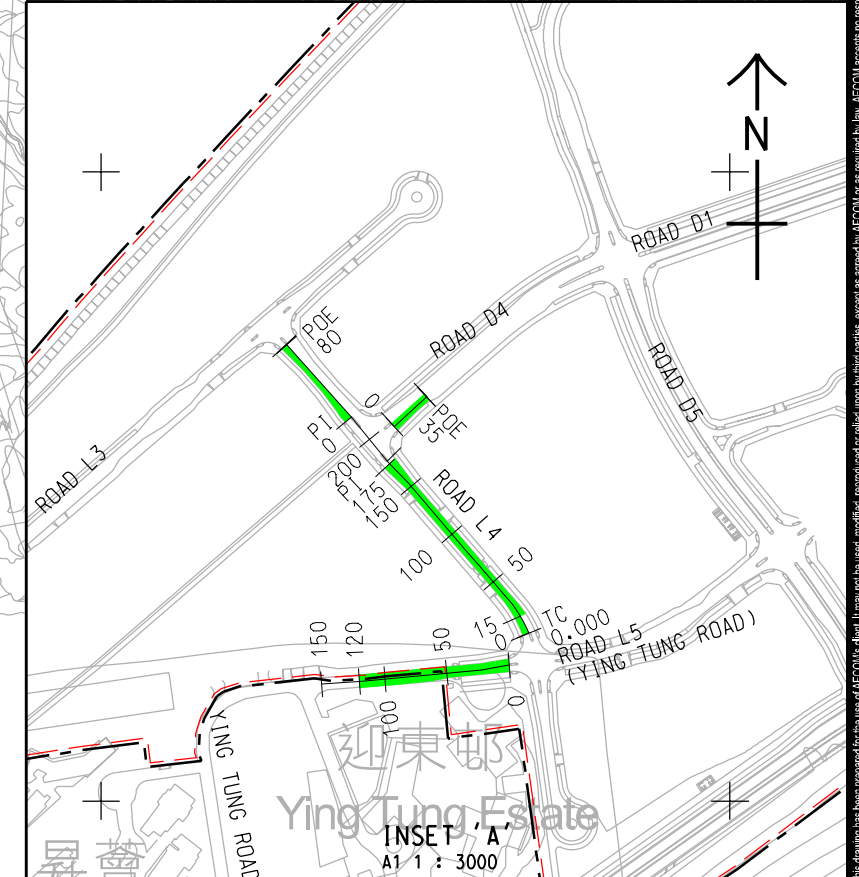


V:\BAKU\US5-BAC\CSWP\pldtrv\Create PH file\new\CSWP-75\cbrt\pht  
 Plot File by: hao.lic  
 PATH p:\aecom\as-pw\benliu\com\AECOM\_DSO2\ASDocuments\60507694\_TCNTE - D&C\CAD PRODUCTION\DRAWING\REPORT\Z35-Z35\_003.dgn  
 ISO A1 594mm x 841mm  
 Approved:  
 Checked:  
 Designer:  
 Project Management Initials:



- LEGEND:**
- TUNG CHUNG NEW TOWN EXTENSION EP BOUNDARY FOR TCE IN EP (EP NO. EP-519/2016)
  - BOUNDARY OF TCE
  - NOISE BARRIER IN EIA (AEIAR- 196/20 16) AND EP (EP NO. EP-519/2016)
  - LOW NOISE ROAD SURFACING MATERIALS



**AECOM**

PROJECT  
**TUNG CHUNG NEW TOWN EXTENSION (EAST) - DESIGN AND CONSTRUCTION**

CLIENT  
**CEDD** 土木工程拓展署  
 Civil Engineering and Development Department

CONSULTANT  
 AECOM Asia Company Ltd.  
 www.aecom.com

SUB-CONSULTANTS

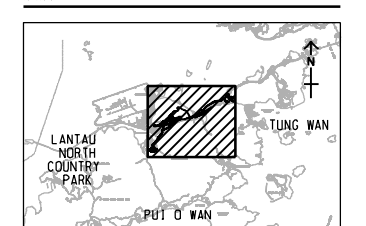
**ISSUE/REVISION**

IR	DATE	DESCRIPTION	CHK.

**STATUS**

**SCALE**  
 A1 1 : 10000

**DIMENSION UNIT**  
 METRES



**PROJECT NO.**  
 60507694

**CONTRACT NO.**  
 CE 69/2015 (CE)

**SHEET TITLE**  
 GENERAL LAYOUT OF NOISE BARRIERS AND LOW NOISE SURFACING MATERIALS IN TUNG CHUNG EAST

**SHEET NUMBER**  
 60507694/Z35/003

This drawing has been prepared for the use of AECOM's client. It may not be used, modified, reproduced or relied upon by third parties, except as agreed by AECOM or as required by law. AECOM accepts no responsibility, and seeks no liability whatsoever, to any party that uses or relies on this drawing without AECOM's express written consent. Do not scale this document. All measurements must be obtained from the paper dimensions.